

PETKIT

PUROBOT MAX PRO

Self-cleaning Cat Litter Box



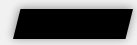
C O N T E N T S

- 01 Selling Points and Main Functions
- 02 Detailed Product Information
- 03 How to Use and Bind APP
- 04 FAQs

PETKIT

PART ONE

01



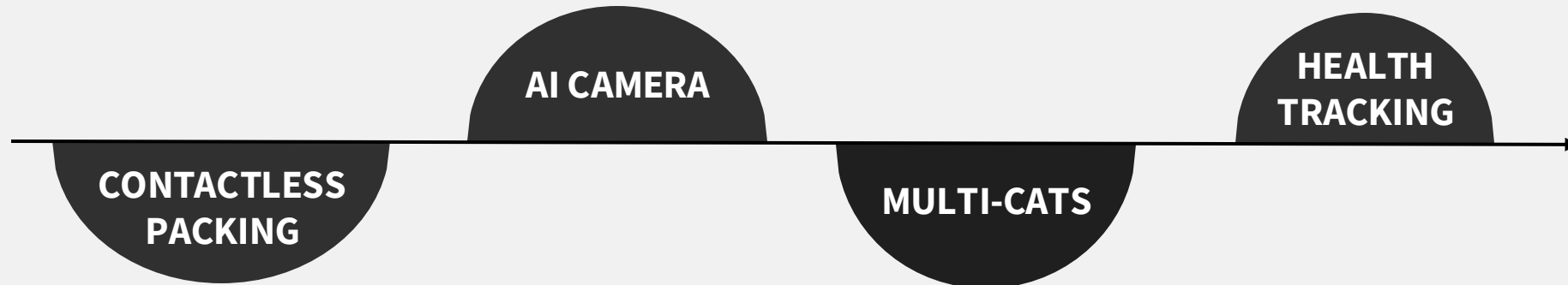
Selling Points

► 210° Wide-angle Fixed Camera

- 24/7 pet litter box usage livestream
- Fecal health monitoring
- One-way audio

► Litter Box Usage Tracking

- Visualized report card
- Cats' weight scale
- Litter box usage frequency and duration



► Drawstring Waste Packing

- Non direct contact to cat waste for stink-free waste management
- 8L waste bin

► Multi-cats Recognition

- Identify cats of similar weights through facial features and weight change
- Personalized feline IDs

Main Functions

Visualized litter box usage tracking with a 210° wide-angle camera

Fecal health monitoring through stool consistency and clump size

Multi-cat recognition via facial features and weight records

Drawstring waste packing in one pull

Triple odor control to keep air clean and fresh

12 safety sensors and anti-pinch design for 100% safety

Patented anti-leakage cylinder with seamless ShieldBase

76L interior space and wide entrance

Compatible with most clumping cat litters

35 dB quiet operation for stress-free moments



PETKIT

PART TWO

02



Detailed Product Information



AI Camera for Pet Health Monitoring



Detailed Product Information



Specialized Litter Box Usage Tracking

The AI camera monitors your cat's **entire litter box visit**, generating a **visual report card** that provides an at-a-glance view of their toileting habits and fecal health.



Auto-captured Images for Fecal Health Monitoring

By capturing **images of stool and clumps** during each cleaning cycle, the camera offers visual records of **urine clumps and stool consistency**, helping to identify signs of bowel or urinary issues.



Multi-cat Recognition for multi-pet families

PUROBOT MAX PRO identifies cats by combining **weight measurement** with **AI-powered facial feature recognition**, facilitating precise identification in multi-cat households with cats of similar weights.





Detailed Product Information



24/7 Pet's Litter Box Usage Livestream

Join in your pet's day-to-night livestream room and track their litter box routines, even from afar.



See Clearly Day and Night

The camera seamlessly switches to **infrared night vision** and captures your cat's motion. Customize **LED fill light** settings during auto-scooping to ensure clear visibility for fecal monitoring.



Camera Privacy Protection

PETKIT app allows you to customize the **camera's working hours**, manage **pet visit detection**, or **turn off the camera** entirely to safeguard your privacy.



Detailed Product Information



Holistic Litter Box Health Database

By accessing to PETKIT app, pet owners can check through their pet's personalized feline profiles, including **toilet visit frequency**, **toileting duration** and **weight changes**. It offers urinary and bowel health insights.



Anti-pinch Structure and 12 Safety Sensors Guarantee 100% Safety for Your Cats

The patented anti-pinch design ensures the cylinder stops at a specific angle to **keep the entrance open at all times**. 12 integrated safety sensors ensure maximum safety for every litter box visit.



Compatible with Most Clumping Litter

Pet owners can choose between two replaceable litter sifters, each designed for optimal cleanliness and to minimize litter usage based on the type of clumping cat litter they use. The **Litter Sifter P99032** is ideal for **larger particle litters**, while the **Litter Sifter P99033** works best with **finer-granule litters**.





Detailed Product Information



Contactless Drawstring Waste Packing & 17 Days Free Scooping

Packing waste in one pull. The patented drawstring packing system unleashes a stink-free and contactless waste management experience. An **8L waste bin** for 17 days free-scooping, friendly to frequent travelers.



Triple Odor Control: Sealed Waste Bin, Odor Eliminator N50 2.0, Breezy Smart Odor Eliminator

Embrace the fresh air with both cylinder and waste bin deodorization. N50 2.0 effectively **neutralizes 98% of ammonia** from cat waste, while Breezy Smart Odor Eliminator **ensures 45 days of purification** with cylinder diffusion.



Maximized Comfort for Cats of Different Sizes

76L interior space and **wide entrance** allow **large-sized, short-legged and senior cats** can access and exit easily.



PETKIT

Detailed Product Information



Anti-leakage Cylinder with Seamless ShieldBase

Featuring with built-in silicone strips of better seal, leakproof and durable cat litter pad, patented brim structure, and a **360° seamless ShieldBase**, the cylinder ensures superb **leakage prevention** and easy maintenance.



Unlock Seamless Cat Care with PETKIT App

PETKIT app allows pet owners to **control the device remotely** and **customize multiple smart settings** in one tap away, including switching auto-scooping modes, deodorization modes, camera privacy setting, and kitten protection mode, etc. The app generates **pop-up notifications** when your cats visit the litter box and keeps you informed about the working status.



35 dB Whisper Quiet Operation

The noise level is equal to a quiet library, ensuring peaceful, stress-free experience for both pet owners and sensitive cats.





Detailed Product Information

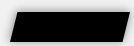


Upgrade to PETKIT CARE+ for Enhanced Pet Health Monitoring

PETKIT Care+ Subscription Plans	Free	Basic	Premium	Premium+
	(30-day free trial of premium plan)	\$3.99/month \$21.99/year	\$6.99/month \$69.99/year	\$11.99/month \$109.99/year
One-way audio	✓	✓	✓	✓
Stool image checkup	✓	✓	✓	✓
Facial recognition	✓	✓	✓	✓
24/7 Live view streaming	✓	✓	✓	✓
1-Day event image storage	✓	✓	✓	✓
30s event video storage of today	✓	✓	✓	✓
7-Day highlight video storage	—	✓	✓	✓
7-Day highlight & full video storage	—	—	✓	✓
30-Day highlight & full video storage	—	—	—	✓

PART THREE

03



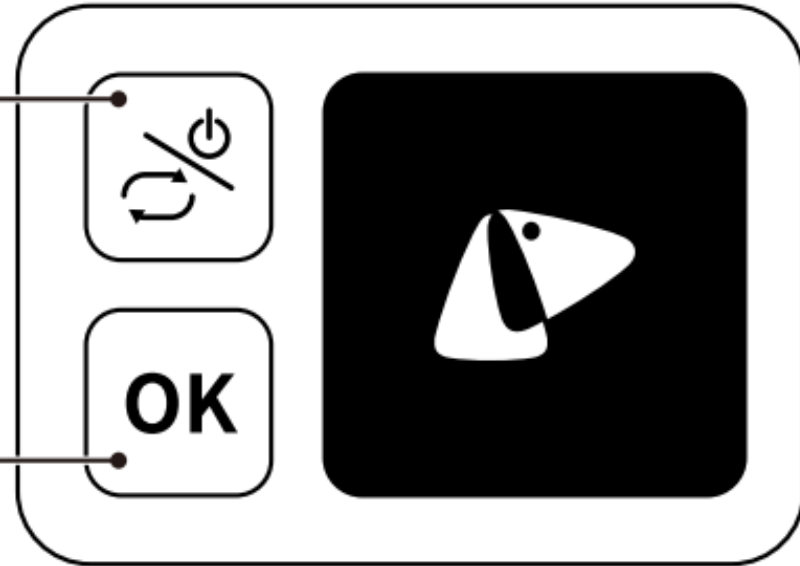
Button Instruction

Press and hold ○
Turn on / Turn off

Press ○
Switch functions
The screen will display the selected function.

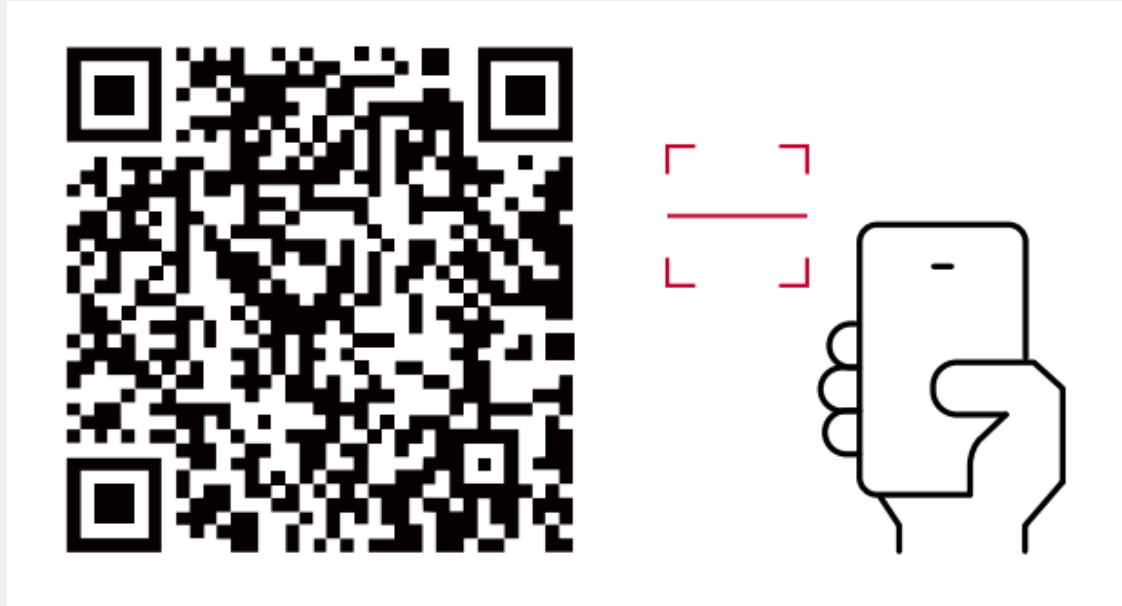
Press ○
Execute the selected function

Double press ○
Level cat litter in the cylinder



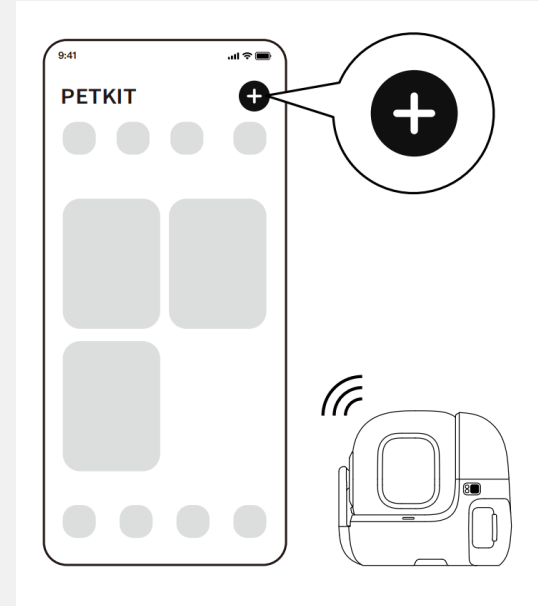
PETKIT

How to Bind PETKIT APP



Step 1:

Download the PETKIT App from the App Store or Google Play. Or scan the QR code to download and install.

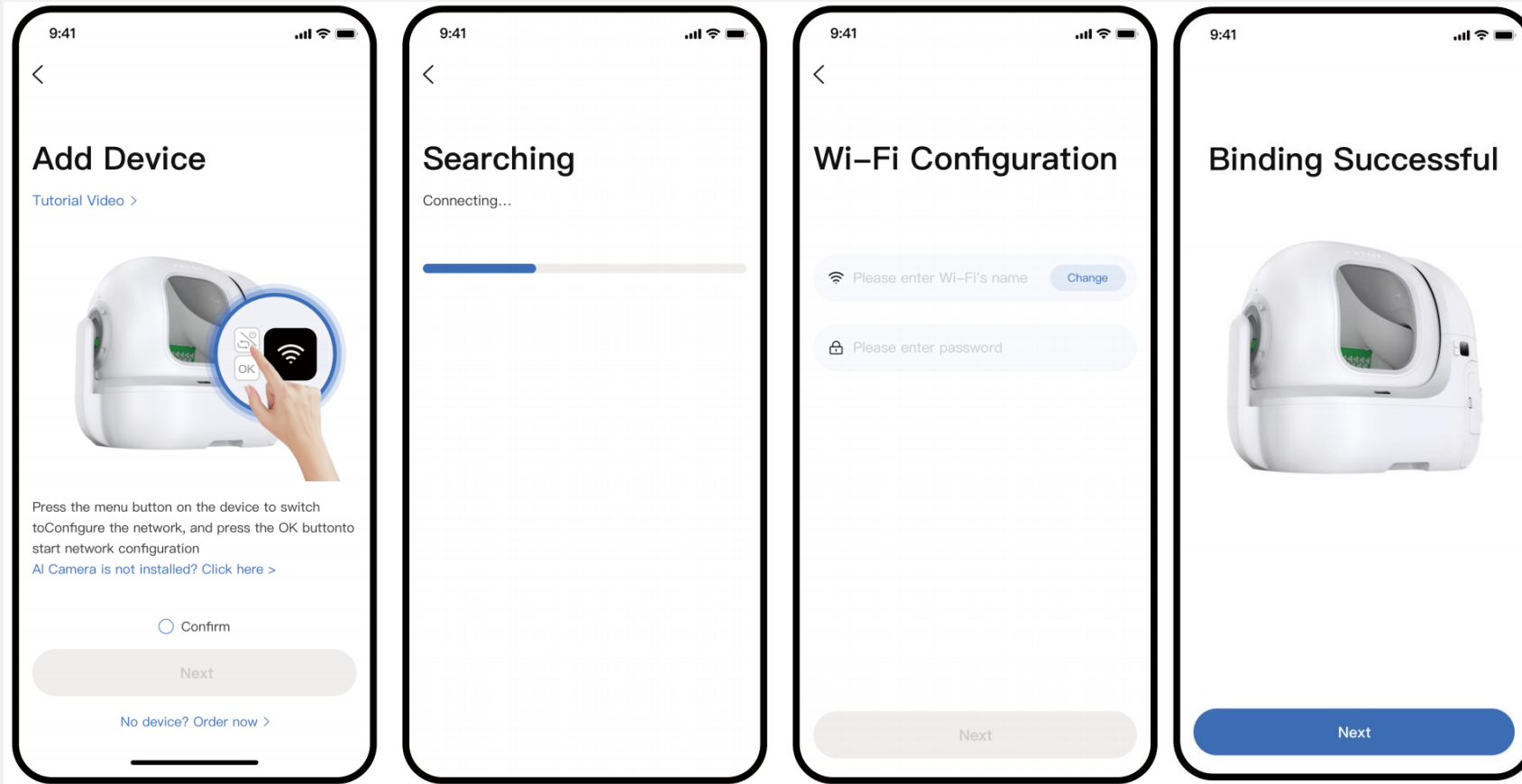


Step 2:

Open the PETKIT App, click “+” and select PETKIT PUROBOT MAX PRO WITH CAMERA SELF-CLEANING CAT LITTER BOX.



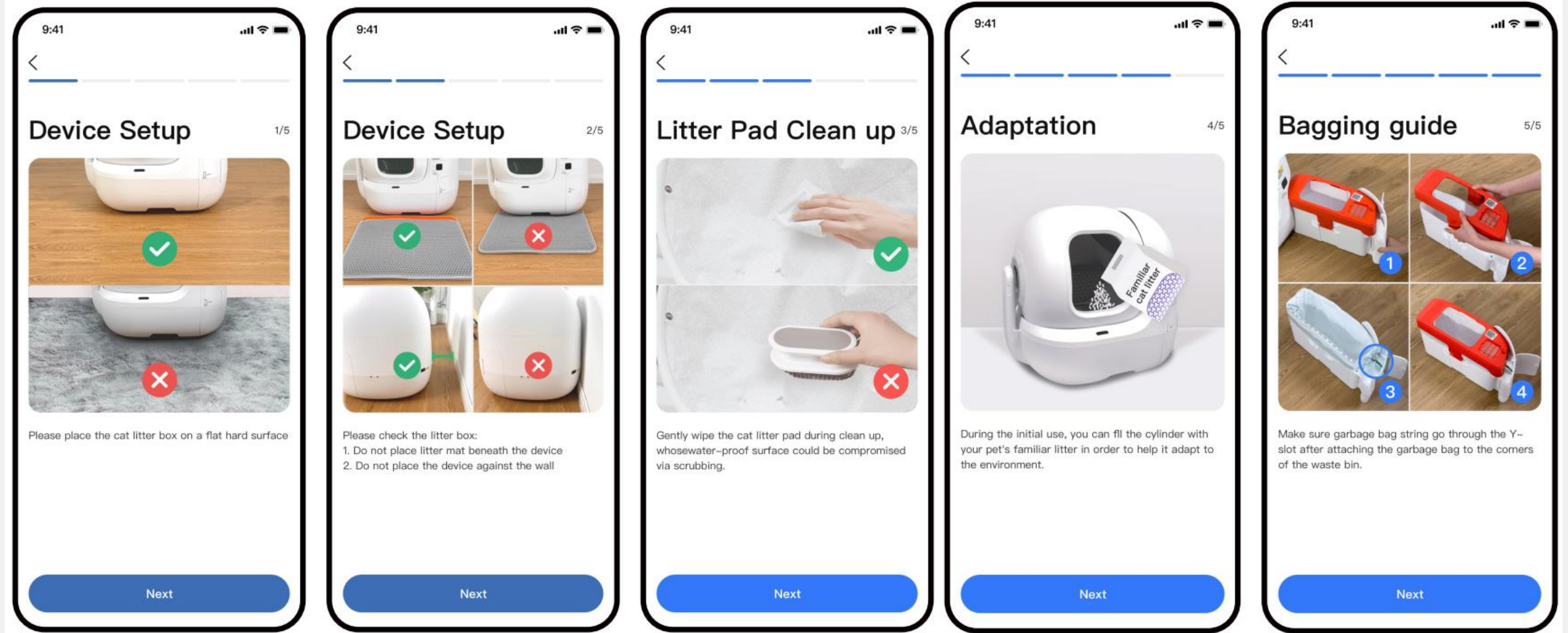
How to Pair with the PETKIT APP



Step 3:

Follow the page guide to complete connection

How to Pair with the PETKIT APP

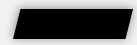


Step 4:

Read usage guide and activate

PART FOUR

04



FAQs

01

Does PUROBOT MAX PRO have a weight limit?

We recommend a minimum weight of 1.5 kg (3.3 lbs) and a maximum weight of 10 kg (22 lbs) to use PUROBOT MAX PRO.

02

Can kittens use PUROBOT MAX PRO?

We do not recommend using PUROBOT MAX PRO for kittens or cats weighing less than 1.5 kg (3.3 lbs). If you have both young and adult cats, we suggest enabling Kitten Protection Mode via PETKIT app. This mode disables auto cleaning and periodic cleaning to ensure your kitten's safety.

03

Can PUROBOT MAX PRO's AI camera rotate?

No. PUROBOT MAX PRO features a fixed-angle camera that specifically monitors your cat's litter box usage and behaviors inside the cylinder.

04

How often should I empty the waste bin?

Based on PETKIT lab results, PUROBOT MAX PRO's 8L waste bin can support up to 17 days free-scooping for a single-cat household. In hot or humid conditions, packing frequency may vary, so you can adjust the waste management cycle as needed.

05

How should I install a trash bag for PUROBOT MAX PRO?

Step 1: Remove the waste bin lid and refill the trash bag. Step 2: Pull the drawstring of the bag and thread it through the center of the Y-shaped groove. Step 3: Put back the waste bin lid.

06

Can I place PUROBOT MAX PRO on a carpet?

For accurate weight measurements, PUROBOT MAX PRO should be placed on a hard, level surface. Maintain a distance of at least 5 cm (1.97 in) from walls and ensure that no objects obstruct the entrance.

07

What types of cat litter should I use for PUROBOT MAX PRO?

It comes with two litter sifters: Litter Sifter P99022, ideal for larger litter particles like tofu and mixed litter, and Litter Sifter P99023, compatible for finer particles like bentonite and mineral/clay litter. Both work well with most clumping cat litter, but we advise against using litter longer than 12 mm (0.5 in).

08

How can I prevent fecal streaking on the cylinder?

Streaking may occur if your cats don't always cover their poops or have soft or watery stools. We recommend using fast, tight-clumping cat litter instead of slow-clumping litter. You can enable Waste Covering Mode in the scooping setup via the PETKIT app, which helps evenly cover waste in cat litter before cleaning cycle to minimize fecal streaking.

09

How do I train my cat to use PUROBOT MAX PRO?

Position the PUROBOT MAX PRO where the previous litter box was located, using the same type of litter. Mix a scoop of the old litter with the new litter to maintain a familiar scent. Allow waste to accumulate gradually in the old box to ease the transition. To help your cat get accustomed to PUROBOT MAX PRO, gently guide them inside when needed. Be patient with sensitive cats that may take longer to adapt to the automatic litter box.

10

How does PUROBOT MAX PRO ensure my cat's safety?

PUROBOT MAX PRO is crafted with a patented anti-pinch structure to keep the entrance open at all times when the cylinder rotates to a specific angle. PUROBOT MAX PRO is equipped with 12 safety sensors, including advanced proximity and weight sensors. The cat litter box automatically pauses when a cat is nearby or inside the cylinder. Weight sensors ensure the cylinder remains still while your cat is inside until it exits.

11

Do I need to use PETKIT special trash bags?

Using incorrectly sized or overly thick trash bags might lead to machine abnormalities. Third-party waste bags might be too thick, preventing proper attachment to the ring and affecting the waste container's operation.

12

Will PUROBOT MAX PRO still works if the connection is lost?

Yes, even without a network connection, PUROBOT MAX PRO will operate according to your preset settings. However, the PETKIT app will not update litter box usage data when the network is lost.

13

How do I update the firmware?

PUROBOT MAX PRO firmware supports OTA (over-the-air) updates remotely, allowing for progressive releases and enhancements of new features. You will need to manually update your firmware through the PETKIT App.

14

How do I clean PUROBOT MAX PRO?

Remove the detachable components of PUROBOT MAX PRO first: the cylinder, magnetic side cover, cat litter remover, litter sifter, and cat litter pad. Then you can wash these components. Wipe the base of the main unit as needed. Do not rinse the base of the main unit with water. Make sure all parts of the products are completely dry before reassembly.

PETKIT

—

THANK YOU!